


The Caney "Y" Vacation Rentals Pelican Point

(Sleeps 7)

Rates / Directions



Pelican Point Details..... Amazing Gulf view location at the point where Caney Creek Meets the ICW you can watch barges and birds as you relax on your shaded deck overlooking the ICW and Gulf of Mexico. Family friendly house including a crib in the kid's room and room for the family pet downstairs. House sleeps 7 not including baby crib.

 **Pet Friendly** property **DOWNSTAIRS ONLY** for up to two well behaved, and well cared for dogs with pet agreement and pet fee secured. Shaded dog run with dog door to shelter.

Amenities:

Private Pier has fishing lights, & Fishing chairs.

3 Bedrooms - Beds include:

BR# 1 - 1 King

BR# 2 - 1 King

BR# 3 - 3 twin - Bunk beds plus a pull out twin under bottom bunk.

1 Child's Crib

Full Kitchen - Beautiful counter space, all dishes, pots, pans & utensils, microwave, electric stove, oven, fridge & dishwasher.

Satellite TV - In living room, & BR 1&2, BR 3 DVD only.

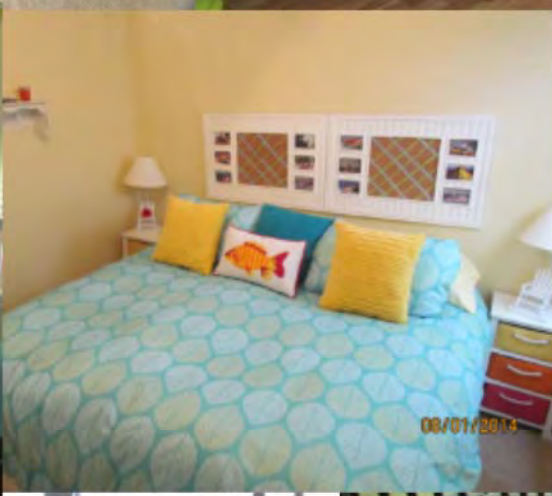
All Linens provided for bedding, towels and kitchen. Please bring your own towels for fishing and beaching.

Charcoal Grill Available- Ash can provided for disposal.

**Call 979-244-4910
for availability & to Book Your Stay.**

[CLICK HERE for a guided Fishing trip with Captain Gene.](#)**







The Caney "Y" Vacation Rentals
2170 County Road 201, Sargent, Texas 77414
www.caneyrealty.com
979-244-4910



Directions to Pelican Point

81 Caney Court

Sargent, Texas

GPS Coordinates: 28°45'47.13"N 95°38'43.27"W

From Houston

Take 288 South

1. Take first Lake Jackson Exit which is "Richwood"/FM 2004 & turn right on FM2004
2. Continue on FM 2004 approximately 6 miles and cross Hwy 36 where FM 2004 turns into FM2611
3. Continue straight on FM2611 approximately 16 miles to where it T's at FM 457 - Turn Left
4. Travel approximately 7.5 miles (pass Texaco), and turn Right on CR 201 (also known as "Carancahua")
5. Travel Approx 2.5 to end and turn right on Caney Court.
6. House is last house on road.

From Bay City:

Take FM457 South off State Highway 35 in Bay City

Travel approximately 20 miles and you'll be at the intersection of 2611 and 457 - follow directions from number 4 above.